

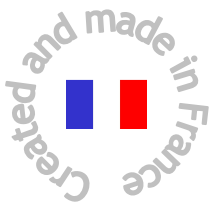
## Innovation 2013

The 25MT IX3 is a mini-crane equipped with a long-span hydraulic double-telescope jib, mounted on an 18° slewing ring (optional).

It uses a **3-cylinder kinematic system** developed by **Mobilev Cranes** allowing for greater angular motion of the jib.

All speeds are adjustable from 0 to 100% with the wired remote control or with the radio remote control (optional).

Lastly, the 25MT IX3 may also be equipped with the **"hydraulic winch" option**. Ideally installed on the mini-crane, the cable runs inside the jib for optimum safety, which is an innovation by **Mobilev Cranes**.



## Technical specifications



Maxi load .....	2000 kg
Unladen weight (without options) .....	2400 kg
Admissible slope in IX3 (unladen crane) .....	15 %
Maxi translation speed .....	3 km/h
Adjustable lifting speed .....	from 0 to 15 cm/s
Adjustable telescoping speed .....	From 0 to 13 cm/s
Batteries .....	24V – 460 Ah
24V cc silent motor driven pump.....	3 kW
Ø x Front wheels width (mm) .....	200 mm
Ø x Back wheels width (mm) .....	450 mm

## Standard equipment

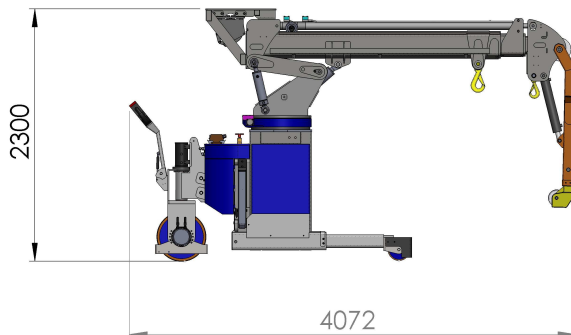
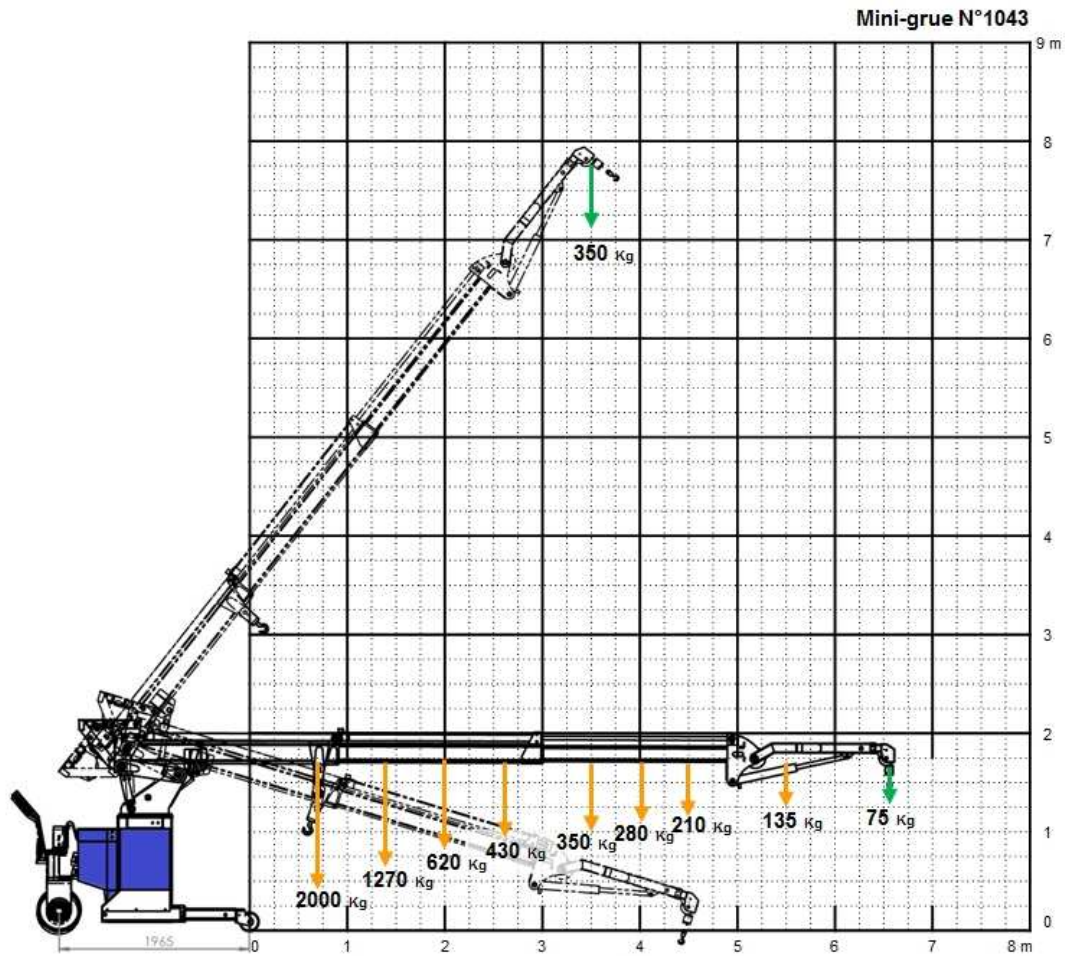
- Anti-tilt system
- 1 hydraulic drive wheel
- Hydraulic drive assistance
- Hydraulic stabilizers
- Automatic braking system
- Automatic parking brake
- Integrated electronic battery charger 220V~
- Wired remote control with potentiometer
- 2 storage boxes

## Main options

- Hydraulic additional JIB
- Hydraulic winch 1000/2000 Kg
- Radio remote control
- 18° slewing ring

# Technical sheet 25MT 3X1

Self-propelled mini-crane with accompanying operator



6 axes wired remote control  
with potentiometer